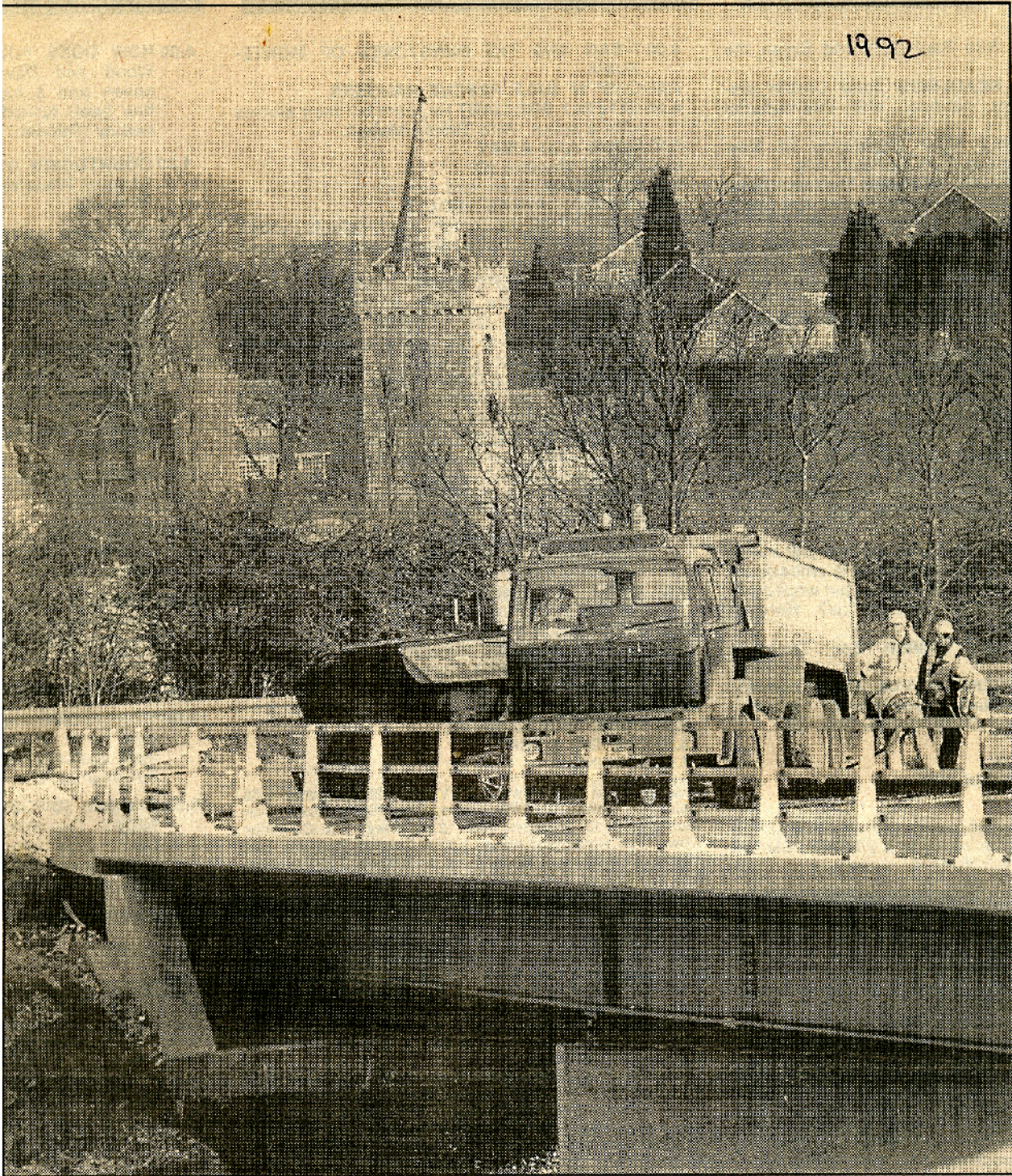
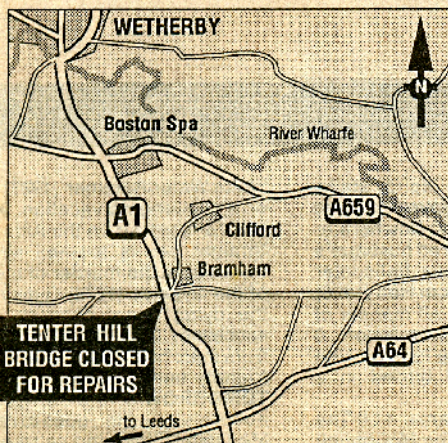


BRIDGING THE GAP FOR FRUSTRATED DRIVERS

1992



▲ DELAYS SET TO END: Work nears completion on the new Tenter Hill Bridge at Bramham.



A KEY link across the notorious A1 at Bramham, near Leeds, will open in the next few days ending months of delays for frustrated motorists.

The Tenter Hill Bridge to the west of the A1 has been closed since the end of July while work on upgrading that section of the A1 to full motorway standard went ahead.

The £15m scheme to re-align the six-kilometre stretch of the A1 between Bramham and Wetherby included a new bridge over the road at Tenter Hill. Severe peak-hour delays were experienced and revised bus routes and timetables were introduced.

The bridge was expected to be completed by the beginning of December, but problems meant that extra work had to be carried out and the cold weather over the Christmas period led to further delays as replacement material could not be laid.

The Department of Transport said the work was always weather dependent but it was expected the route would be re-opened in the next few days. The West Yorkshire Passenger Transport Authority said the revised 741 service would return to normal on Sunday, January 26.



1991

